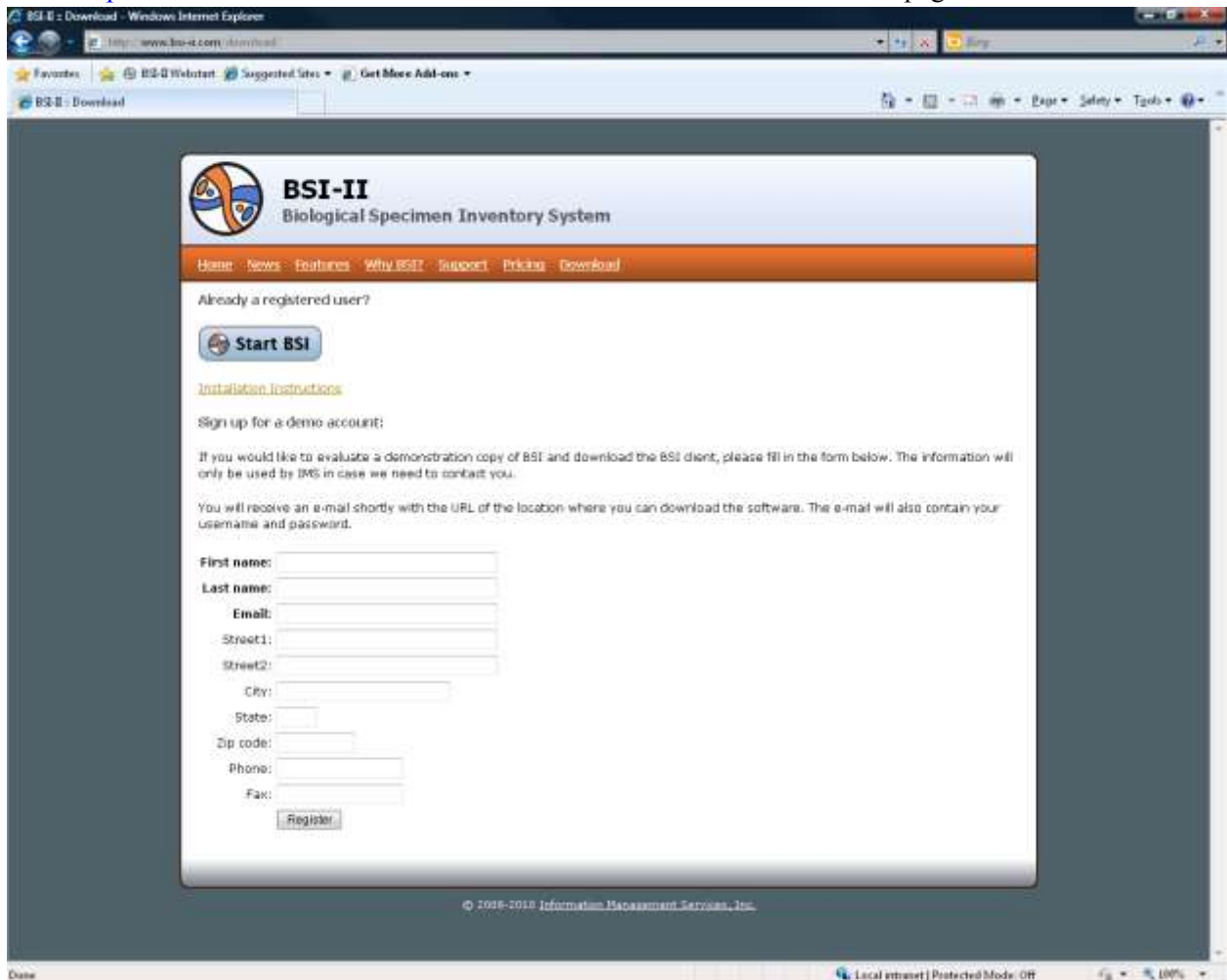


Installing BSI

BSI uses WebStart technology to deploy and upgrade the BSI client. WebStart makes the deployment and upgrade of applications easy and automatic.

Version 6.0 or greater of the Java Runtime Environment needs to be installed. The Java Runtime Environment can be installed from the BSI installation Web page. Please follow the instructions below to install the BSI client.

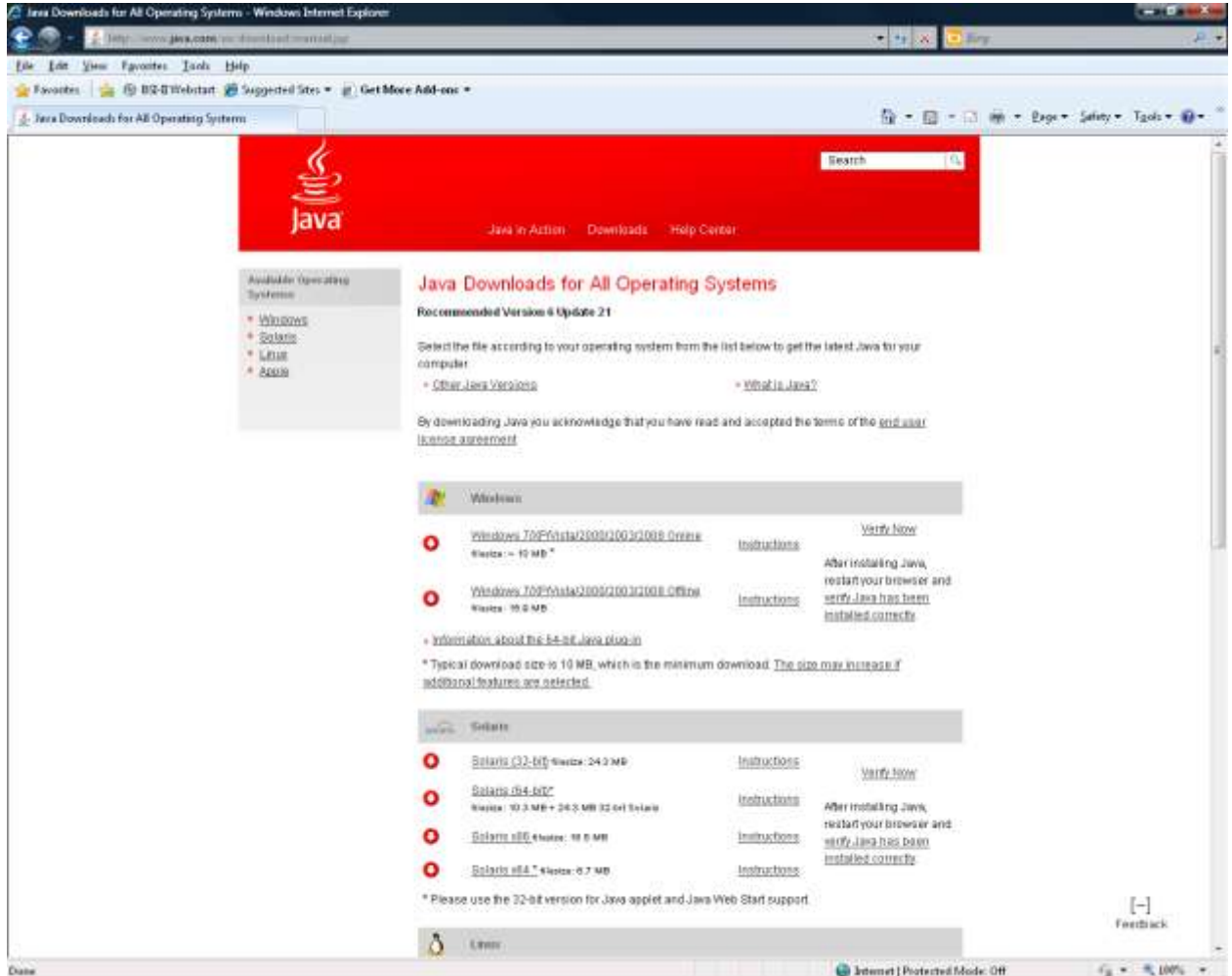
1. Click <http://www.bsi-ii.com/download/> to browse to the BSI installation Web page.



2. If you already have Java Runtime Environment (JRE) 6.0 or greater installed, click on the Start BSI button. Proceed to step 6.

If JRE 6.0 or greater is not installed, your browser will display a link (<http://www.java.com/en/download/manual.jsp>) allowing you to install JRE 6.0 or greater. Click on the link and proceed to step 3.

3. On the Java Download page, the latest version of JRE is available for download; as of Sept 22, 2010, the most recent version is **Java Runtime Environment (JRE) 6u21**. Click on the [Windows 7/XP/Vista/2000/2003/2008 Offline](#) link to download the **jre-6u21-windows-i586-s.exe** file. Run the set-up file that you downloaded.



4. An installing wizard will open. Follow the instructions on the wizard. When the installation is finished, an Installation Complete dialog will open. Select the Finish button.
5. After installing the JRE, navigate back to <http://www.bsi-ii.com/download/> and click on the Start BSI button.
6. Downloading and installation of BSI will begin. The shortcut for the client will read "BSI-II 7.2 (or current version)." You may want to remove the previous version's shortcut.
7. Upon logging in for the first time, you will need to enter your username and password as well as the database you are logging onto.